



Rilco Manufacturing Company
12700 Tanner Road Houston, TX 77041
www.rilco.com info@rilco.com +1 (713) 466-4777



Introduction to Rilco Manufacturing Company

Since the early 1970s Rilco Manufacturing has made it the company objective to Exceed Customer Expectations. As a customer-focused organization, the number one goal is to provide clients with complete satisfaction. The company's persistent standard of excellence has allowed Rilco to grow from a small insulated pipe support shop to a global leader in cutting-edge designs and manufacturer of state-of-the-art pipe support systems & components.

The renowned engineering team at Rilco utilizes the latest software packages in which they create economical, yet superior quality products. The engineering department's concise calculations and the company's high expectation of quality are assured through vigorous testing and extensive Research and Development. Consistent production of pipe support products that not only meet, but exceed customer requirements, as well as regulatory standards, has earned Rilco its ISO 9001 certification. Meaning, Rilco Manufacturing embodies excellence in its products, processes, supplier relations, as well as in its leadership and drive for continuous improvement.

The new Rilco headquarters is located at 12700 Tanner Road, in Houston, TX. With the additional 120,000 square feet and the strategic setup of production lines, new equipment, additional space and a revitalized focus on efficient manufacturing, we have recently doubled our current production capacity.

Rilco Headquarters - Tanner Road Location



Production Capabilities

1. Rilco operates using an in-house MRP computer system to track/verify parts & project status
2. Rilco operates with two 10-hour workday shifts to expedite orders
3. Rilco has the mindset & commitment to expedite orders to ensure the best delivery

Quality Assurance

1. Rilco is ISO certified to ISO 9001
2. Welding certified to stringent Canadian Welding Bureau CSA Standard W47.1
3. Rilco employs a dedicated ISO Quality Assurance Specialist to ensure production of exceptional products
4. Rilco fabricates to all standards, project standards, & specifications as applicable
5. Rilco holds weekly Quality Assurance meetings with all department managers to ensure compliance



Rilco Manufacturing Company
12700 Tanner Road Houston, TX 77041
www.rilco.com info@rilco.com +1 (713) 466-4777

Pipe Support Information

Rilco Products

1. Insulated Supports
 - I. Cryogenic or Cold Service Insulated Supports & Anchors
 - a. High Density Polyurethane Foam Insulated Supports & Anchors
 - b. CryoWrap-Cryogel (Aspen Aerogels) Insulated Supports & Anchors
 - c. Permalite Block/G10 Block Supports
 - d. FOAMGLAS® Supports
 - II. Hot Service Insulated Supports & Anchors
 - a. Calcium Silicate Insulated Cold Service Supports & Anchors
 - b. PyroWrap-Pyrogel XT (Aspen Aerogels) Insulated Supports & Anchors
 - c. FOAMGLAS® Supports
 - III. Dual-Temperature Insulated Supports & Anchors
 - a. FOAMGLAS® Supports
2. Spring Supports
 - I. Variable (Grinnell/Anvil Equal & Other Type Equal) Spring Supports
 - II. Constant-Lever Type (Grinnell/Anvil Equal) Spring Supports
 - III. Constant-Three Spring Type (Lisega Equal) Spring Supports
3. Hanger Systems & Hardware
 - I. Boiler Rod/Heavy Application Rod Hanger Systems & Clamps
 - II. Hanger Hardware
4. Specialty Supports
 - I. Sway Struts
 - II. Riser Clamp Systems
 - III. Sway Braces
 - IV. Mechanical & Hydraulic Snubbers
 - V. Special Application Support Systems
 - VI. FRP Application Pipe Supports
 - VII. Vibration & Noise Reducing Pipe Supports
5. Fabricated Steel Supports
 - I. Steel Cradle Pipe Supports
 - II. Structural Steel Support Members
 - III. Instrument & Equipment Stands
 - IV. Elbow & Trunnion Fabrications
 - V. Specialty Fabrications

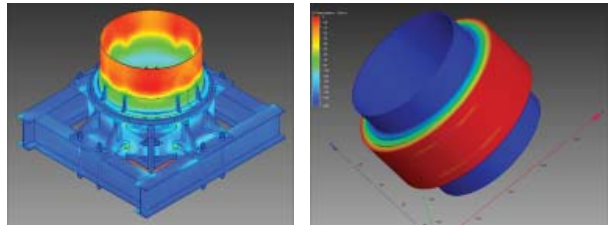


Rilco Manufacturing Company
12700 Tanner Road Houston, TX 77041
www.rilco.com info@rilco.com +1 (713) 466-4777

Pipe Support Information

Rilco Project Design & Support

1. Engineering Design Assistance
 - I. In-House experienced engineering staff to support piping design & special situations
 - II. Project Submittal Drawing Capabilities
 - II. Proficient at Finite Element Analysis for thermal calculations & analyzing design stresses by creating highly technical models for pipe support design evaluation purposes
 - III. Temperature & stress analysis during the design phase allows for accurate selection of materials and determines allowable stresses at the support locations
2. Project Management Support
 - I. One point of contact project manager assigned to each project for personal support & ownership
 - II. Project management submittal documentation to promptly complete all document deliverables



Rilco Estimating Department

1. Rilco's estimating team delivers small quotes within 24 hours, & larger project quotes within 1 week.
2. Our state of the art in-house material take-off program allows our estimating team to quote a 10,000 line item job within 3-4 days, for example.
3. With over 40 years of experience pricing pipe supports, our estimating staff has the expertise & efficiency to quickly & accurately provide quotations on both standard & custom requirements.

Safety

1. Rilco holds daily safety meetings at each production department to ensure employee knowledge & safety
2. Rilco employs a dedicated Safety Specialist to ensure compliance, training, & employee safety

Labor Union

1. Rilco can provide Union Labor on projects where required—utilizing our local Pipefitters Union for labor

Project/Shipping Locations

1. Rilco builds banded wood crates for overseas shipments at our facility—our crates comply with ISPM 15 requirements
2. Rilco builds custom skids for shipments as well as shipping & packing on **standard pallets for land freight**

Conclusions:

Rilco specializes in pipe supports for your type of projects
Rilco would like the opportunity to quote you on your projects
Rilco can provide you with an accurate quote in a short amount of time



Rilco Manufacturing Company
12700 Tanner Road Houston, TX 77041
www.rilco.com info@rilco.com +1 (713) 466-4777

Pipe Support Product Pictures

RILCO CRYOWRAP

Pipe Support with Aspen Cryogel Insulation



RILCO PYROWRAP

Pipe Support with Aspen Pyrogel Insulation



RILCO POLYURETHANE FOAM COLD PIPE SUPPORTS





Rilco Manufacturing Company
12700 Tanner Road Houston, TX 77041
www.rilco.com info@rilco.com +1 (713) 466-4777

Pipe Support Product Pictures

RILCO POLYURETHANE FOAM CRYOGENIC PIPE SUPPORTS



RILCO POLYURETHANE FOAM CRYOGENIC CUSTOMIZED ANCHOR PIPE SUPPORT



POLYURETHANE AND PYROWRAP COMBINATION CUSTOM PIPE SHOES

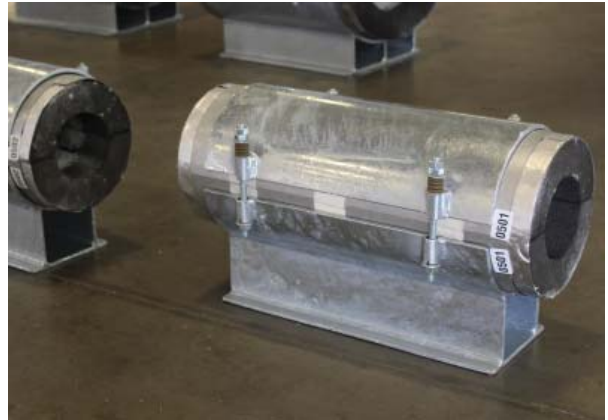




Rilco Manufacturing Company
12700 Tanner Road Houston, TX 77041
www.rilco.com info@rilco.com +1 (713) 466-4777

Pipe Support Product Pictures

FOAMGLAS® PRE-INSULATED PIPE SUPPORTS



FOAMGLAS® PIPE ANCHORS



RILCO F-TYPE VARIABLE SPRING





Rilco Manufacturing Company
12700 Tanner Road Houston, TX 77041
www.rilco.com info@rilco.com +1 (713) 466-4777

Pipe Support Product Pictures

RILCO VARIABLE SPRING HANGER SUPPORTS



TRADITIONAL CONSTANT

D-Type Horizontal Constant Spring Support



TRADITIONAL G-TYPE CONSTANT

Vertical Constant Spring Support





Rilco Manufacturing Company
12700 Tanner Road Houston, TX 77041
www.rilco.com info@rilco.com +1 (713) 466-4777

Pipe Support Product Pictures

TRADITIONAL CONSTANT

B-Type Horizontal Constant Spring Support



RILCO CAM ROLLER

3 Spring Constant



RILCO CAM ROLLER

3 Spring Constant





Rilco Manufacturing Company
12700 Tanner Road Houston, TX 77041
www.rilco.com info@rilco.com +1 (713) 466-4777

Pipe Support Product Pictures

RILCO UPTHRUST CONSTANT



RILCO CALCIUM SILICATE HIGH TEMP SERVICE HOT SUPPORTS

With Heat Trace Groove



RILCO MISC. FABRICATED STEEL, CLAMP SUPPORTS, VARIABLE SPRINGS

